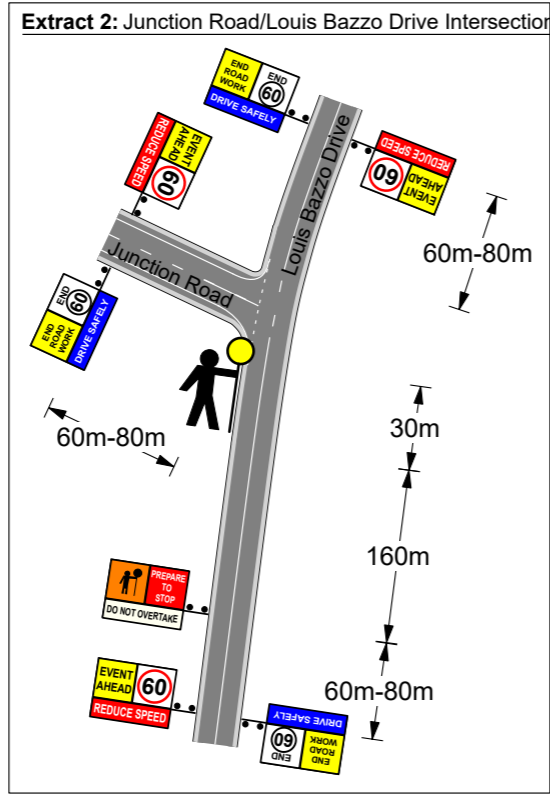
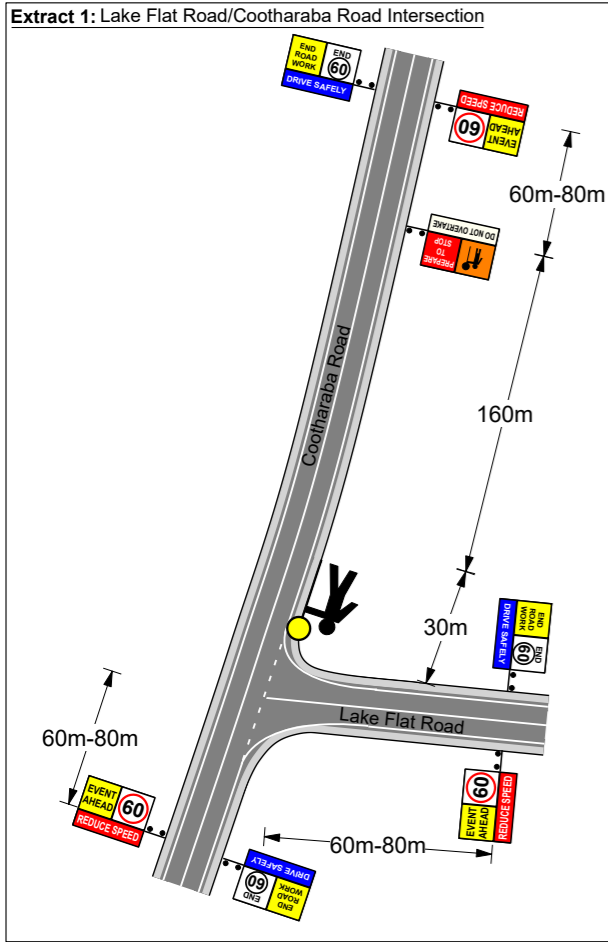
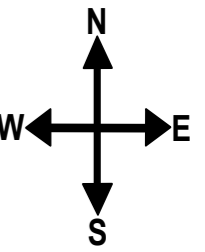
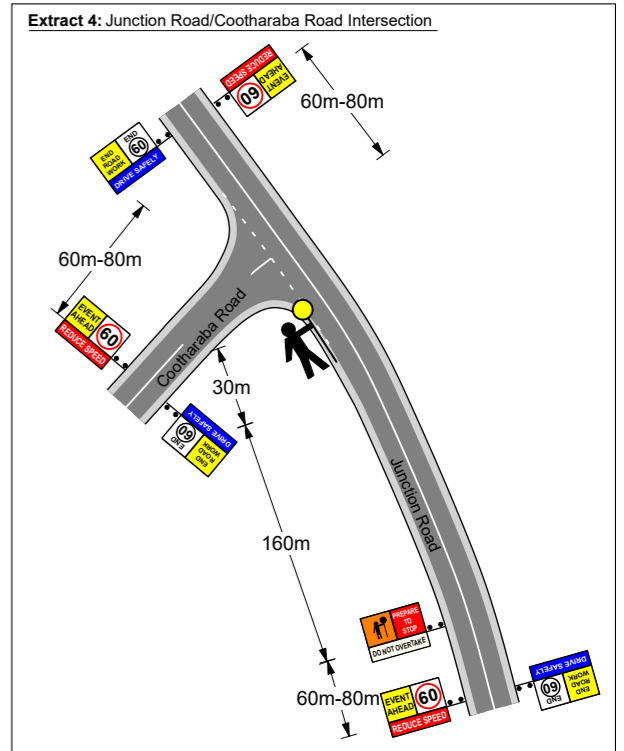
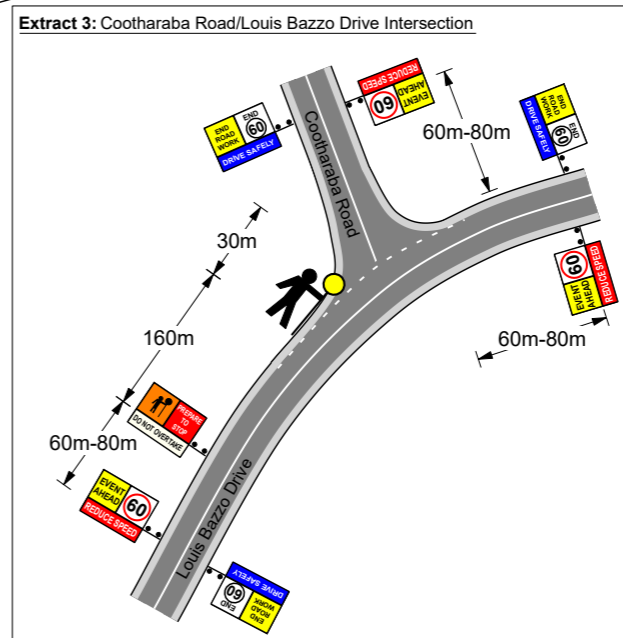
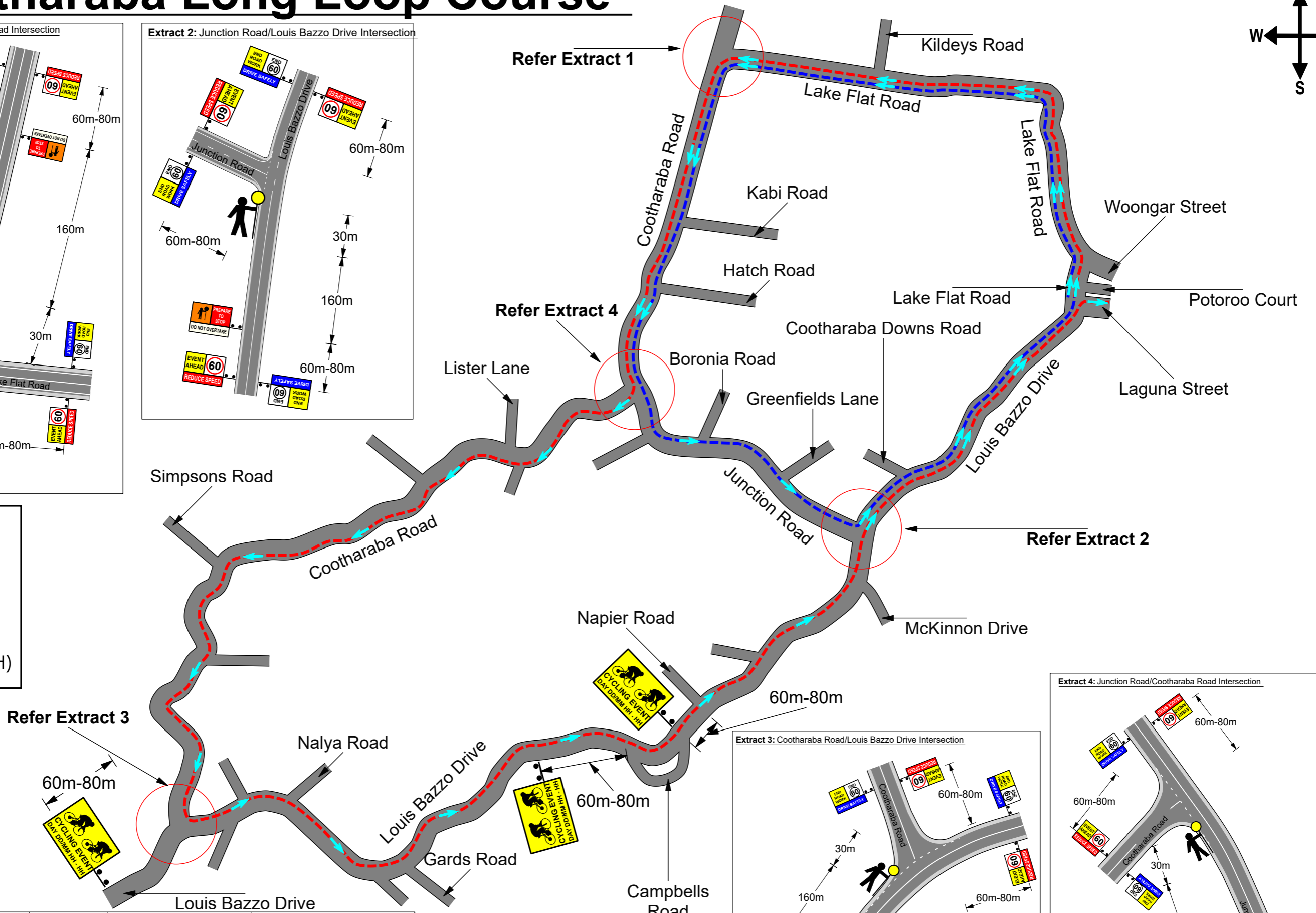


# 3 - Cootharaba Long Loop Course



**Legend**

- Lap 1 Route
- Lap 2 Route
- S/Term: 200mm (H)



		TMR Register No. <b>0080</b>	Job Location: <b>Cootharaba Long Loop Course Overview</b>	Disclaimer: This plan has been prepared as a guide for Traffic Management Purposes from information supplied by third parties. Traffic Management People at all times attempt to be as accurate as possible but disclaims all responsibility and all liability (including without limitation, liability in negligence) for all expenses, losses, damages and costs you might incur as a result of the information being inaccurate or incomplete in any way, and for any reason.  A site specific risk assessment conducted by a competent person is required before implementing this plan.
	Drawn By: Douglas Pettigrew	TMD Open Certification: OP 239 Date: 23/08/2016	Client: Sunshine Coast Cycling Club	
Approved By: Rachael Greany	TMD Open Certification: OP 227 Date: 23/08/2016	Scale: NTS	Version No: 1	